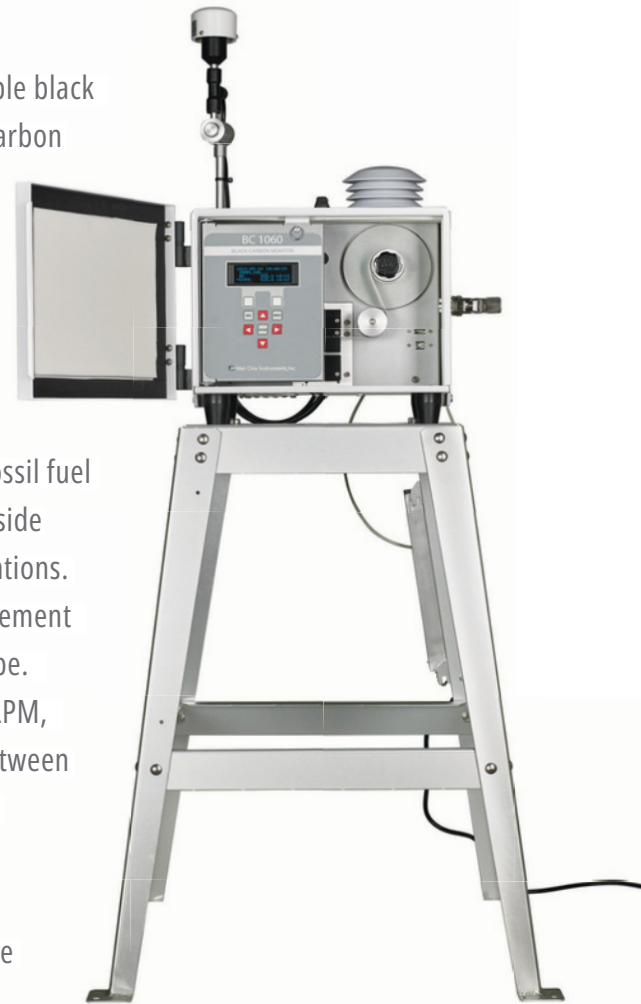




BC-1060 Portable Black Carbon Monitor

PAGE 1 OF 2

The Met One Instruments, Inc. BC-1060 portable black carbon monitor measures and reports black carbon concentrations with user-selectable time resolution down to one-minute at both UV (370 nm) and IR (880 nm) illumination wavelengths. The combination of portability and dual-wavelength illumination permits rapid, easy deployment on a broad scale for source apportionment (fossil fuel vs. biomass combustion) determination, roadside monitoring, and emergency responder applications. The BC-1060 employs a standard tape measurement system using a 25-m long roll of glass-fiber tape. Operating at a continuous sampling rate of 2 LPM, up to 6 months of uninterrupted operation between filter tape replacement may be expected. The BC-1060 is self-contained within its own weatherproof enclosure containing its pump making it ideal for quick deployment. It may be operated indoors or outdoors.

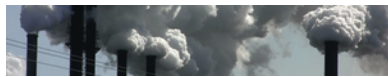


For operation in highly polluted environments the BC-1060 is supplied with a flow dilution system which may extend the required frequency of tape replacement by up to a factor of five.

The BC-1060, all inclusive, weighs approximately 35 lb. (16 kg) and has a small footprint making it easy to transport. It may be operated from either household power or may be battery powered.

Applications

- Air Quality Surveillance**
- Rapid Source Apportionment Determination**
- Saturation Studies**
- Particulate Emissions Studies •Near-Roadside Monitoring**
- Climatological Studies**
- Emergency Responder Applications**



Specifications Measurement Principle:

Dual Wavelength Optical Absorption.
 Near Infrared (880 nm LED) for elemental carbon.
 Ultraviolet (370 nm LED) for elemental and organic carbon.



Measurement Range:
 Data Display Resolution:
 LDL (2σ):

<1 ng/m³ to >100,000 ng/m³ (effective)
 0.1 ng/m³
 < 8 ng/m³ with 1 minute sample time
 < 1 ng/m³ with 1 hour sample time



Measurement Interval:
 Flow Rate:
 Pump Type:
 Filter Tape:
 Power Supply:

1,5,10,15, 30, or 60 minutes.
 2 LPM
 Internal DC Powered Pump
 Reinforced glass fiber
 12V DC. Universal 100-240 VAC 50/60Hz input,
 12 VDC 8.5A output supply included
 -50°C to +70°C



Ambient/Operating Temperature:
 Ambient Humidity Range:
 Internal Data Storage:
 External Data Storage:
 Data Collection Interface:

0 to 90% RH, non-condensing
 4 MB internal memory. 108,134 data records
 One USB Flash Drive Port
 Single serial output through either RS-232, USB, or
 Ethernet port. 1200 to 115200 baud.

Compatible Software:
 User Interface:

Comet™ software and USB/Ethernet driver CD included
 Menu-driven interface with 4x20 character backlit LCD display
 and dynamic keypad

Inlet:
 Unit Weight:
 Deployed Dimensions:

PM
 2.5 or PM1 cyclonic separator, 2 LPM flow rate
 Approximately 35 lbs (16 kg)
 Height: 30.5 cm Width: 35.6 cm Depth: 36.8 cm

DISPLAY SWINGS OPEN FOR EASE OF ACCESS

