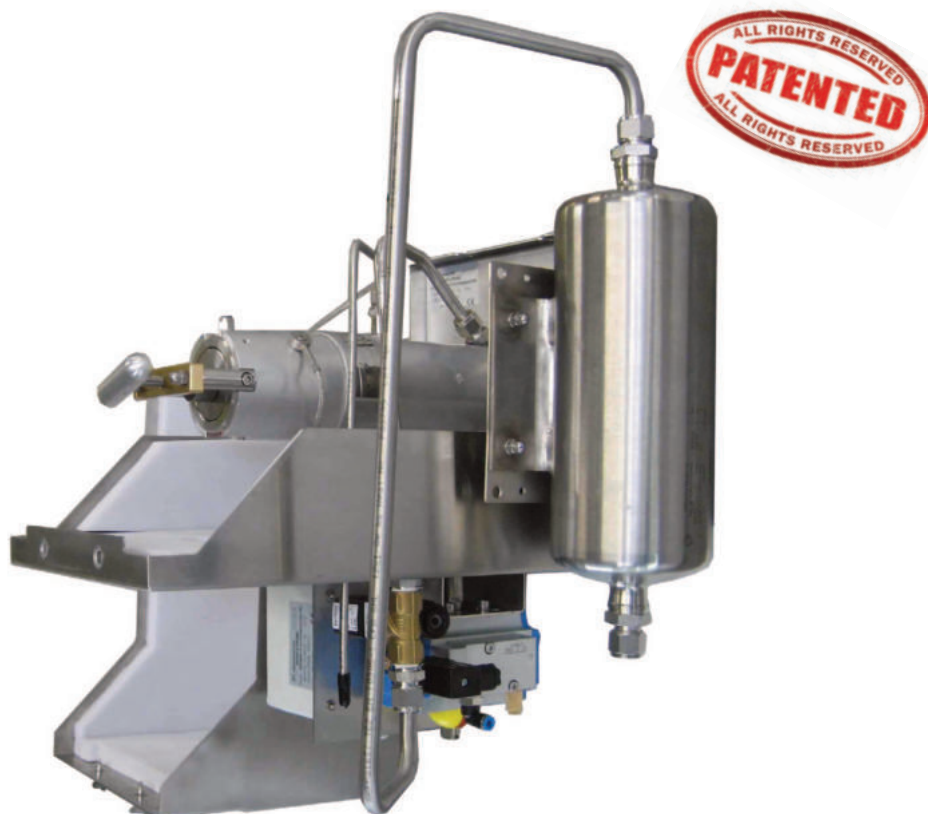




JES-360

Gas Sampling Probe for Pre-Filter Back Flush



APPLICATION

- Representative continuous gas sampling in processes containing high dust and humidity
- Extractive gas analysis
- Emission (CEMS) and process monitoring
- Removal of dust from the sample gas

BENEFITS

- Cost-optimized solutions
- No condensation or chemical reactions of sample gas
- Convenient filter replacement
- Low maintenance
- Safe unattended operation
- Easy start-up
- Even for high dust concentrations
- Reliable protection of the analyzer system
- Long filter lifetime

FEATURES

- Modular design for custom-tailored applications
- Highly efficient filter cleaning
- Homogeneous heating without cold spots
- Large active filter surface
- Filtration from outside to inside
- Filter element change without tools
- Different material of filter elements
- Electronic temperature controller including over temperature protection
- Temperature status contact
- Weather protection housing
- Various options and upgrades
- Wide range of accessories
- Integrated back flush / back purge controller (option)

TECHNICAL DATA

Model

JES-360

Description	stationary gas sampling probe for pre-filter back flush
-------------	---

Operation

Temperature	180 °C (ex works), adjustable 5 °C to 200 °C
Status limiter set values	–30 K /+20 K fixed to set point
Operating pressure	max. 2 bara (max. 7 bara optional)
Mounting position	5° to 15° incline (recommended), torsion angle max. 45°
Heating-up time	< 1 h
Ambient temperature	for start-up –20 °C to 60 °C for continuous operation –30 °C to 60 °C

Construction

Dimensions over all (W x H x D)	375 x 418 x 449 mm
Dimensions connection box (W x H x D)	120 x 160 x 90 mm
Filter element	2 µm ceramic or 0,2 µm ceramic surface coated
Active filter surface	170 cm²
Mounting flange	DN 65, PN6; form A according to EN 1092-1; SS316L or 2" ANSI 150 lbs; according to ASME B16.5
Sample gas inlet	G 3/4" female thread
Sample gas outlet	1/8" NPT female thread
Calibration gas connection (feature C)	pipe 6 mm, SS316
Back purge connection (feature K)	pipe 6 mm, SS316
Connection pre-filter back flush (feature J)	NPT 3/8" female thread
Gas wetted materials	SS316L, ceramic, Viton®
Protection class	connection box IP65, probe IP43
Weight	approx. 15 kg, depending on options
Weather protection housing	SS304, thermal insulated, colour stainless steel natural
Approvals / Signs	CE

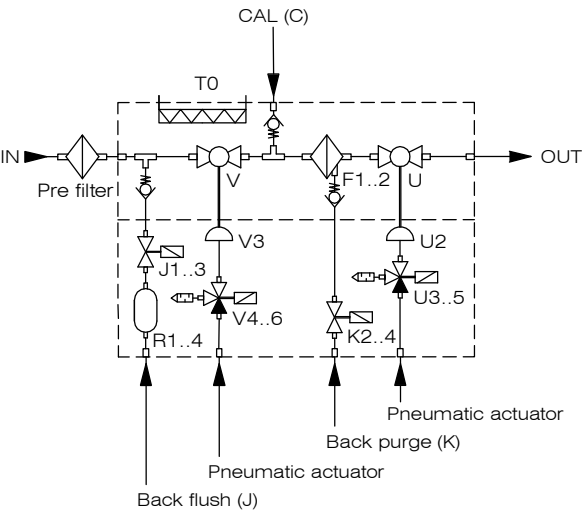
Electrics

Power supply	230 VAC 50 Hz or 115 VAC 60 Hz
Power consumption	approx. 805 VA
Temperature controller / Sensor	electronic / PT100 (IEC-751)
Electrical connection	spring type terminals, clamping range 0,08 to 2,5 mm²
Switching capacity status contact (volt free)	230 VAC / 2 A, min. 5 VDC / 5 mA

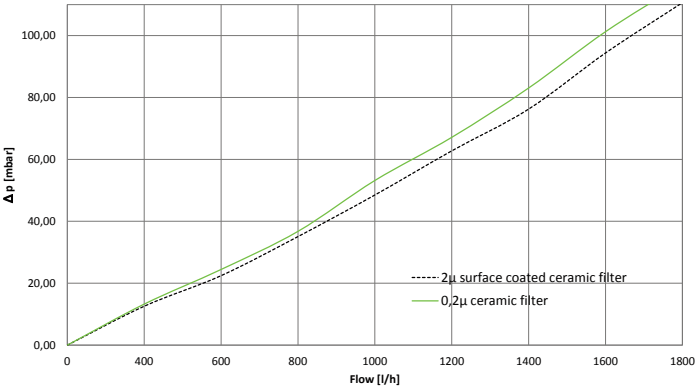
Scope of delivery: sampling probe, mounting material, flange gasket, gasket for sampling pipe, operating manual

FLOW CHART

This flow chart includes all possible variants

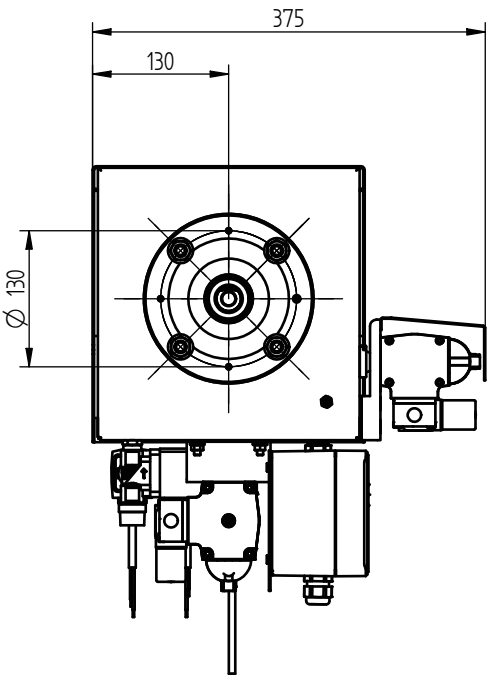
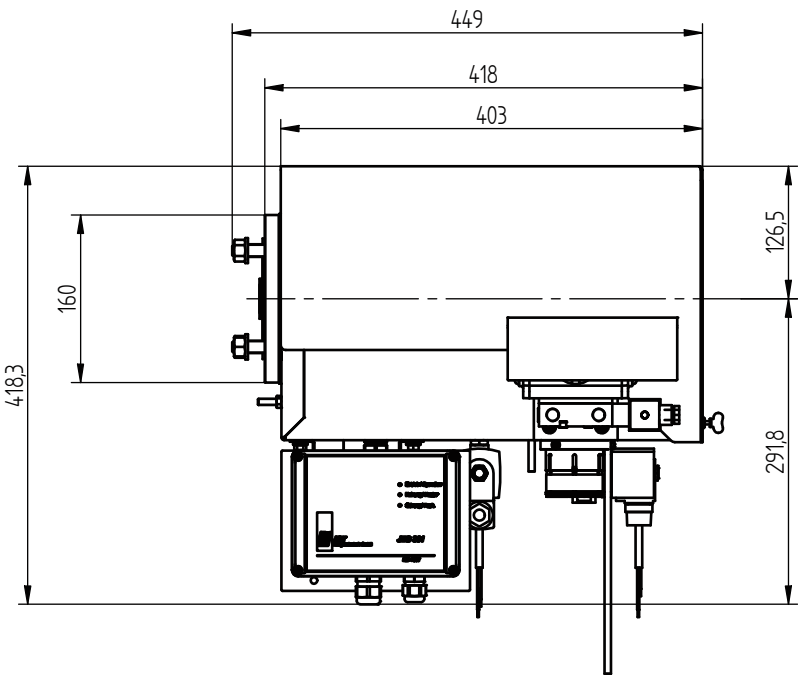


Pressure characteristics in dependence of the gas flow
(for new filter element and 20 °C)



DIMENSIONS

Dimensions in mm



ORDER CODE

includes

weather protection housing

temperature controller 180 °C (adjustable)

		Z1	F1	X1	V0	K0	J0	R0	M1	A1	C			
		Z2	F2	X2	V1	K1	J1	R1	M2	A2	K			
				X3	V2	K2	J2	R2						
				X4	V3	K3	J3	R3						
					V4	K4		R4						
					V5									
					V6									
					V7									
Flange	DN65/PN6 FF													
	2" ANSI RF													
Filter	2 µm ceramic													
	0,2 µm ceramic surface coated													
Power supply	230 VAC 50/60 Hz with temperature controller													
	115 VAC 50/60 Hz with temperature controller													
	230 VAC 50/60 Hz with junction box													
	115 VAC 50/60 Hz with junction box													
Process shut-off ball valve	without shut-off ball valve and without pre-filter back flush													
	without shut-off ball valve													
	with manual operation													
	with pneumatic actuator													
	with pneumatic actuator and pilot valve 24 VDC													
	with pneumatic actuator and pilot valve 115 VAC													
	with pneumatic actuator and pilot valve 230 VAC													
	with electric actuator 230 VAC													
Back purge valve / Port sample probe filter	without													
	back purge port with non-return valve													
	back purge port with non-return valve 24 VDC													
	back purge port with non-return valve 115 VAC 50/60 Hz													
	back purge port with non-return valve 230 VAC 50/60 Hz													
Pre-filter back flush valve	without													
	24 VDC													
	115 VAC 50/60 Hz													
	230 VAC 50/60 Hz													
Isolation ball valve probe outlet	without													
	with manual operation													
	with pneumatic actuator													
	with pneumatic actuator and pilot valve 24 VDC													
	with pneumatic actuator and pilot valve 115 VAC													
	with pneumatic actuator and pilot valve 230 VAC													
	with electric actuator 230 VAC													
Air accumulator	without													
	air accumulator 2 l													
	air accumulator 5 l													
	air accumulator heated 2 l													
	air accumulator heated 5 l													
Mounting hole for mounting clamp	for heated sample line 35-50 mm													
	for heated sample line 58-61 mm													
Connection ports	inch													
	metric													
Additional Options														
Others	calibration port with non-return valve													
	with back flush / back purge controller													
Order code		JES-360.	Z	F	X	V	K	J	U	R	M	A	-	

Scope of delivery: sampling probe, mounting material, flange gasket, gasket for sampling pipe, operating manual

JCT Analysentechnik GmbH offers a wide range of accessories. Please refer to separate data sheets for further information.