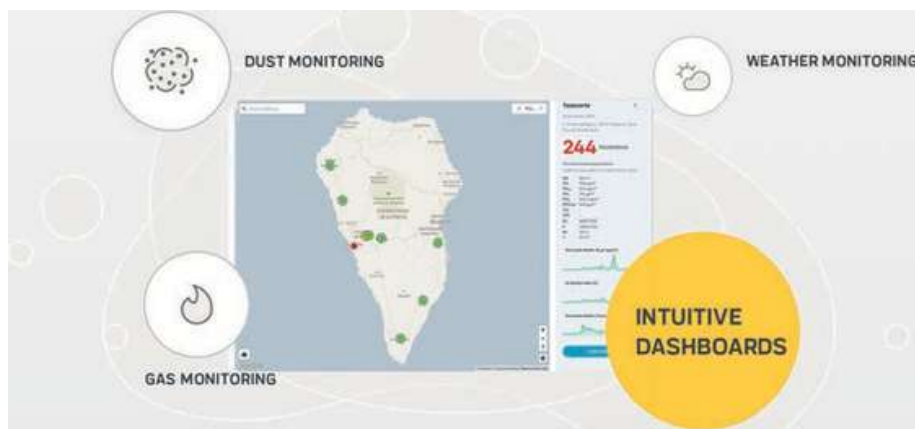


# Air Quality at a Glance With **MYATMOSPHERE**

We make air quality visible: by measuring it with our high-precision instruments and collecting and visualizing it via our cloud-based data platform.

**MYATMOSPHERE** is a comprehensive solution for effective and efficient management of air quality information – from data collection to communication to third parties. Whether it's air pollution caused by urban traffic, construction sites, industry, landfills, or open-pit mining: With **MYATMOSPHERE** you can easily monitor, understand and document air quality.

**To measure is to know** Data acquisition of recognized and relevant air quality parameters in real-time, combined with meteorological measurements allows you to take targeted measures. Simply connect the devices and sensors to the data platform – and you're ready to go!



# Application Examples



**TRAFFIC, RAILROAD, PORTS**



**SMART CITY**



**OPEN PIT MINING & LANDFILLS**



**CONSTRUCTION, REMEDIATION,  
DEMOLITION**



**INDUSTRY**



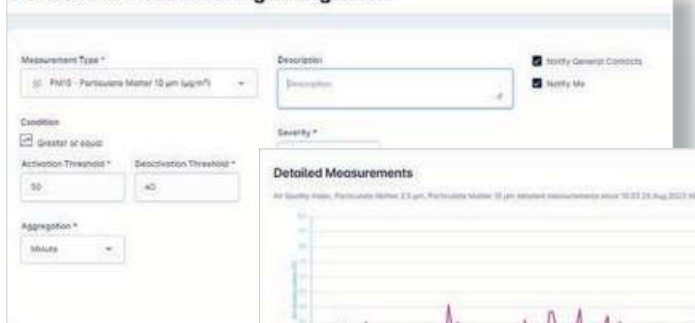
**NATURAL RISK AREAS**

# Principle of Operation

As a cloud-based data platform, **MYATMOSPHERE** enables the monitoring, documentation, and visualization of air quality parameters.

- Automatic visualization of measurement data with export function (svg, png)
- Intuitive site management for devices and data
- Simple measurement data comparisons between sites
- Alarming (e-mail) according to individually adjustable limit values
- (Requires internet connection of the device)
- Convenient data export for further analysis based on a selection of location, time period, parameters, data aggregation
- Standardized integration with third-party solutions through optional API

## Device 99999 Alarm Setting Management



Measurement Type \*

PM10 - Particulate Matter 10 µm (µg/m³)

Description

Notify General Contacts

Notify Me

Condition

Greater or equal

Activation Threshold \*

50

Deactivation Threshold \*

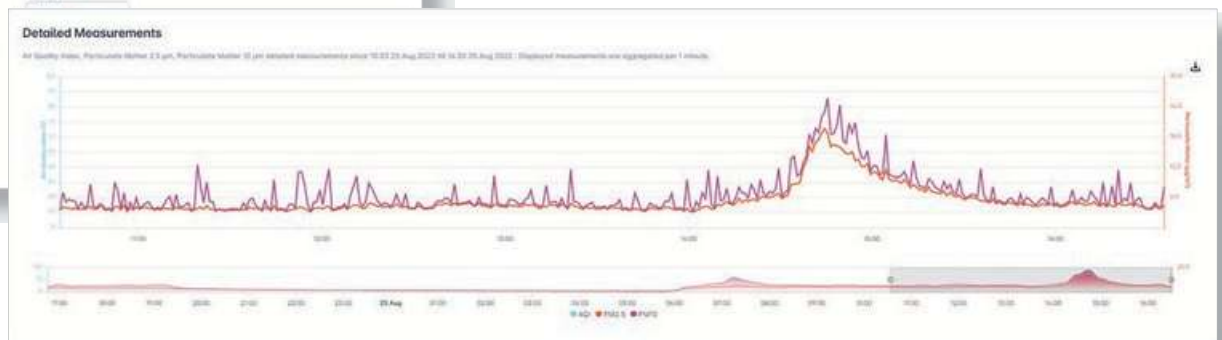
40

Aggregation \*

Minute

Alarm Function

Detailed Measurements



# Technical Features

Interval of data acquisition	1 minute (moving average selectable)
Parameters	PM <sub>1</sub> , PM <sub>2.5</sub> , PM <sub>4</sub> , PM <sub>10</sub> , PM total, CN, pressure, temperature, relative humidity optional: CO, CO <sub>2</sub> , TVOC, O <sub>3</sub> , SO <sub>2</sub> , NO <sub>2</sub> , X <sub>50</sub> , LDSA (depending on device)
Data storage	1-minute average for 24 hours 15-minute average for 2 years
Data evaluation	Graphs with hourly and daily average (selectable)
Measurement location	Acquisition of the device location
Monitoring of device status	Online/offline
Autorecovery	Up to one week. Automatic recovery without data loss in the event of an interruption of the mobile phone connection
Alarm options	Configurable and customizable with automatic email messaging
Data access	Download option (svg, png, csv)
Account management	1 User  On request (chargeable): API interface for easy integration of data into other systems/websites

Subject to technical changes. Connection to the Internet required. Not part of the scope of delivery.

Instruments are not included with MYATMOSPHERE.

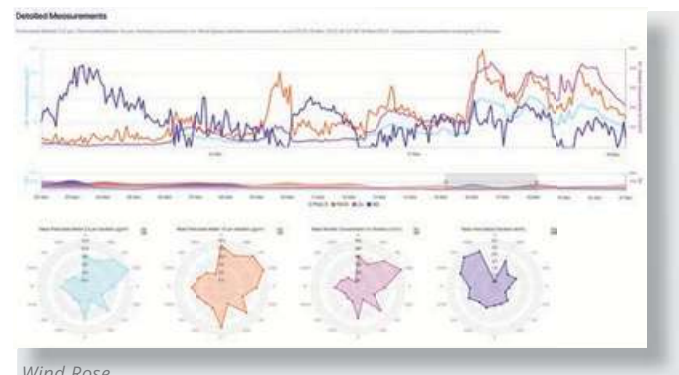
# Special Advantages and Benefits

## INNOVATIVE TECHNOLOGY

- Comprehensive know-how of the Palas aerosol experts
- High-precision and smart measuring instruments
- Cloud-based acquisition, analysis, and documentation of your collected data
- Our intuitive visualization software

## YOUR BENEFITS

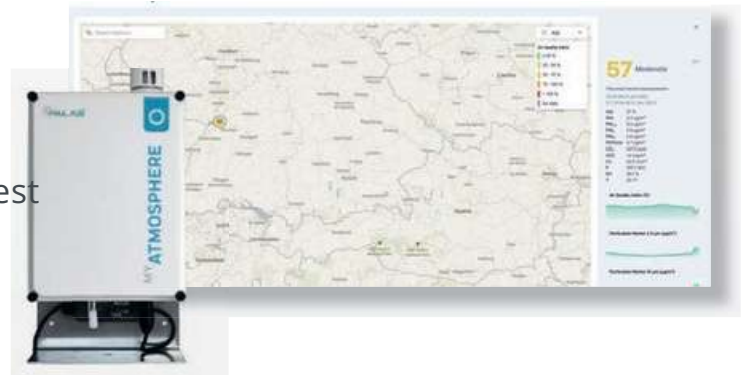
- Improved collaboration with project stakeholders through simple user management
- Save time and money: no third-party software is required for visualization and communication
- Access data from anywhere, at any time – with any device
- Simplified management of multiple monitoring projects
- Integration and remote management of Palas instruments



# Rental & Reporting Services

Choose your measurement technology, data management & additional services.

- **Measurement Technology**  
Choose the device from our AQ GUARD SMART SYSTEM or our FIDAS® SMART SYSTEM that is suited best for your application.



- **Data Management**  
Plug & measure with the **MYATMOSPHERE** cloud including SIM-card.

Rental Period & Packages

- No matter if your project is running for a short or a longer period of time: You decide how long you need the devices.

Services (optional)

There are also various services available, such as API for **MYATMOSPHERE** cloud, standardized weekly or monthly reports based on your measurement data, or compact training for our measuring

- devices and our **MYATMOSPHERE** cloud.

## Office Location

Kingfisher Business Park  
London Road  
Stroud  
Gloucestershire  
GL5 2BY

Registered in England No. 01726773



**Enviro**  
Technology Services Ltd

part of  CuraTerra

info@et.co.uk | +44 (0) 1453 733200 | www.et.co.uk